



# Monthly Digest

learn, play, and explore



## April is National Poetry Month

National Poetry Month is the largest literary event in the world, and this month we're offering a variety of ways to explore poetry at the library! The next time you visit, be sure to browse the thoughtful displays our librarians have curated in celebration of this important art form. Join us for [Adult Writing Workshop](#), where we'll try our hands at creating poetry of our very own. Finally, be sure to stop by [Library Open Mic](#), a community forum for sharing music and the spoken word (poetry, stories and comedy). Share your own original work, share material written by others, or simply come to listen and enjoy. All are welcome!



### From the Director's Desk

[Click here](#) for a letter from the desk of our director, Sara Belisle.

### What's New on Our Shelves?

Visit [Wowbrary](#) to see all the newest stuff at your library!



### Library Links

[Visit Our Website](#)

[Access Your Account](#)

[Calendar of Events](#)

[English Language Learning Resources](#)

[Crisis & Community Resources](#)

[Room Reservations](#)

[Museum Passes](#)

### Contact Us

35 West Main St.  
Marlborough, MA  
(508) 624-6900

[Online Contact Form](#)

Mon - Thurs: 9am - 8pm  
Fri & Sat: 9am - 5pm



HAVE YOUR VOICE HEARD! WATCH FOR OUR COMMUNITY SURVEY COMING IN APRIL!

### Teen Career Exploration Series

Teens, please join us for this exciting, student-led career exploration series! Brought to you by the MPL Teen Advisory Board, each session focuses on a different career field. Panelists from the community will share their experiences leading to their current career, followed by a Q&A

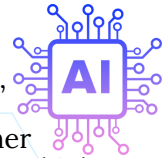


[Thu. 4/4: The Financial Sector](#)  
[Thu. 4/25: Law & Justice](#)

### A Journey into AI & Its Impact on Our Lives

Tue. 4/30 @ 6pm

Unravel the mysteries of AI, explore its transformative impact in education, healthcare, and workplace, and catch a glimpse of the exciting potential it holds for the future. Whether you're a tech enthusiast, a concerned citizen, or a high school student with a curious mind, this lecture caters to all and will leave you with a newfound understanding of this fascinating technology. Presented by Fabricio Murai, an Assistant Professor of Computer Science and Data Science at WPI. [Please register](#) to save your spot!



### Holiday Hours

Closed on  
Mon. 4/15 for  
Patriots' Day



### Sourdough Starter Workshop

Thu. 4/11 @ 6pm

Become a dough master! [Sourdough Brandon](#), expert sourdough baker and food blogger, will teach us how to make, maintain, and store a sourdough starter. We'll learn tips and tricks on how to keep it active, what to make with it, and even leave with some of Brandon's very own sourdough starter! [Registration](#) is required.



### School Break Activities

Another school break is headed our way, and we've got you covered with fun activities to keep the kids busy and happy! Little ones can learn to [draw cartoons](#) from a real cartoon artist, and learn how to save the Earth with the [Science Heroes](#), while Teens are invited to nerd out at [Anime Club](#) or drop by [The Gaming Lab](#) to play Mario Kart, Super Smash Brothers, and more!



[Click here](#) to see our entire schedule of school break activities.