



IN CITY COUNCIL

Marlborough, Mass., _____ MAY 10, 2021

ORDERED:

That there being no objection thereto set **MONDAY MAY 24, 2021** as the **DATE FOR PUBLIC HEARING**, on the Petition from Massachusetts Electric, to install 280' of 4-5" conduit from manhole #10 to pole #93 on Donald Lynch Boulevard near Bigelow Street, be and is herewith referred to the **PUBLIC SERVICES COMMITTEE**.

Yea: 11 – Nay: 0

Yea: Wagner, Doucette, Dumais, Tunnera, Irish, Navin, Landers, Oram, Ossing, Perlman, & Robey.

ADOPTED

ORDER NO. 21-1008292

PETITION FOR MANHOLE AND DUCT LOCATIONS

11

To the City Council
of the City of Marlborough, Massachusetts

RECEIVED
APRIL 29 2021
CITY CLERK'S OFFICE
CITY OF MARLBOROUGH

2021 MAY -4 P 1:35

MASSACHUSETTS ELECTRIC COMPANY requests permission to locate manholes, wires, and ducts, including the necessary sustaining and protecting fixtures, along and across the following public way:

Donald Lynch Blvd

Install 280' of 4-5" conduit from MH 10 to P93

Public Swcs
8/14
5-24-2021

Wherefore it prays that after due notice and hearing as provided by law, it be granted a location for and permission to install and maintain manholes, ducts and wires, together with such sustaining and protecting fixtures as it may find necessary, said manholes and ducts to be installed substantially in accordance with the plan filed herewith marked--

MASSACHUSETTS ELECTRIC COMPANY

Plan No. 29951399 Dated: 2/4/2021

MASSACHUSETTS ELECTRIC COMPANY

By: Robert Leonida
Manager of Distribution Design *WD*

ORDER FOR MANHOLE AND DUCT LOCATIONS

April 29, 2021

By the City Council
of the City of Marlborough, Massachusetts

Notice having been given and a public hearing held, as provided by law,
IT IS HEREBY ORDERED:

that **MASSACHUSETTS ELECTRIC COMPANY** be and it is hereby granted permission to excavate the public highways and to run and maintain underground electric conduits, together with such sustaining and protecting fixtures as said Company may deem necessary, in the public way or ways hereinafter referred to, as requested in petition of said Company dated the **29th day of April, 2021**

All construction under this order shall be in accordance with the following conditions:--

Manholes and ducts shall be set substantially at the points indicated upon the plan marked--
MASSACHUSETTS ELECTRIC COMPANY

Plan No. **29951399** Dated: **2/4/2021**

The following are the public ways or parts of ways along which the manholes/ducts above referred to may be installed, and the number of manholes/ducts which may be installed thereon under this order:--

Donald Lynch Blvd
Install 280' of 4-5" conduit from MH 10 to P93

I hereby certify that the foregoing order was adopted at a meeting of the City Council of the City of Marlborough, Massachusetts held on the _____ day of _____ 2021

Clerk of Council

Received and entered in the records of location orders of the City of Marlborough, Massachusetts
Book: _____ Page: _____

City Clerk

We hereby certify that on _____, 20_____, at _____ o'clock, _____ M
at _____ a public hearing was held on the petition of

MASSACHUSETTS ELECTRIC COMPANY for permission to construct the underground electric
conduits described in the order herewith recorded, and that I mailed at least seven days before
said hearing a written notice of the time and place of said hearing to each of the owners of real
estate (as determined by the last preceding assessment for taxation) along the ways or parts of
ways upon which the Company is permitted to construct the underground electric conduits under
said order. And that thereupon said order was duly adopted.

Council of the City of

Marlborough, Massachusetts

CERTIFICATE

I hereby certify that the foregoing is a true copy of a location order and certificate of hearing with notice
adopted by the City Council of the City of Marlborough, Massachusetts, on the _____ day of
_____ 2021 and recorded with the records of location orders of said City,
Book _____, Page _____.

This certified copy is made under the provisions of Chapter 166 of General Laws and any additions
thereto or amendments thereof.

Attest: _____
City Clerk

Pole & UG Petition/Permit Request Form

City (circled) Town of Marlborough WR # 29951399

Install (quantity) SO JO Poles on (street name)

Remove (quantity) SO JO Poles on (street name)

Relocate (quantity) SO JO Poles on (street name)

Beginning at a point approximately 0 feet N/A of the centerline of the intersection of Donald Lynch Boulevard @ Bigelow Street

and continuing approximately 280' feet in a North direction.

Install underground facilities:

Street(s) Donald Lynch Boulevard @ Bigelow Street

Description of Work Install 280' of 4-5" Conduit from MH10 to P93

ENGINEER Josh Pacheco

DATE 2/4/2021

DISTRIBUTION CIVIL DRAWINGS

NORTH MARLBORO SUBSTATION EXPANSION

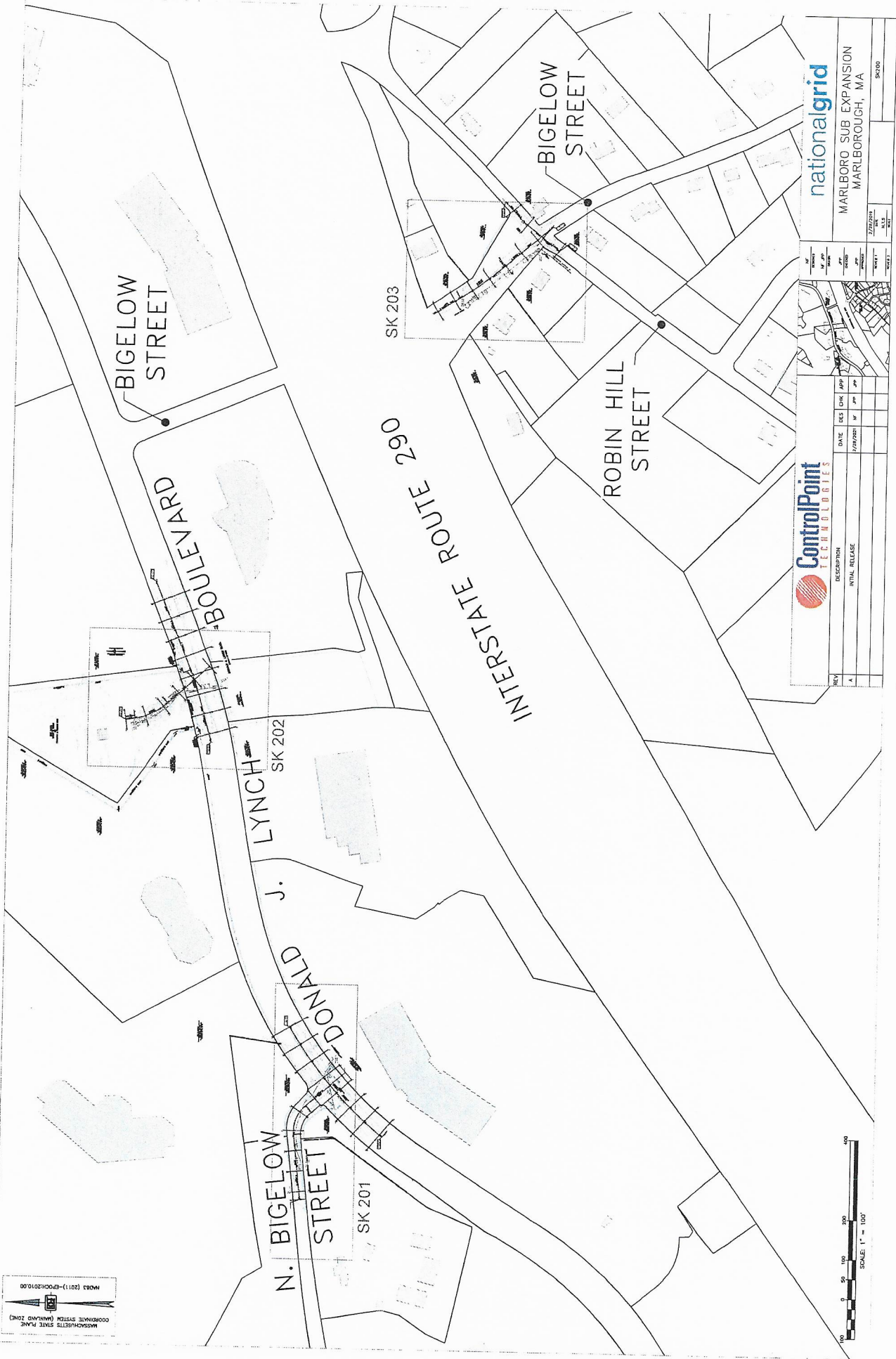
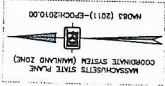
DONALD LYNCH BOULEVARD
MARLBOROUGH, MA

DRAWING LIST	
DRAWING NO.	CONTENTS
GO	COVER
G1	GENERAL NOTES, ABBREVIATIONS, AND LEGEND
SK200	OVERALL LAYOUT
SK201 - SK203	PLAN AND PROFILE
SK300	MH DETAILS
SK301	DUCT BANK DETAILS
SK302	MH CARDS
SK500	TYPICAL CONDUIT TERMINATIONS DETAILS



LOCATION MAP
N.T.S.

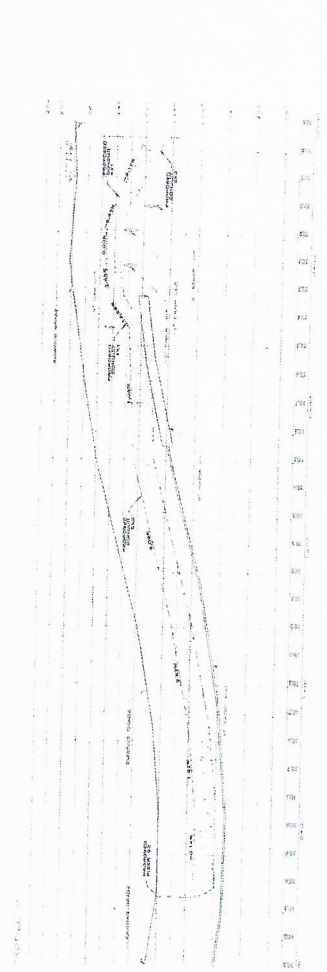
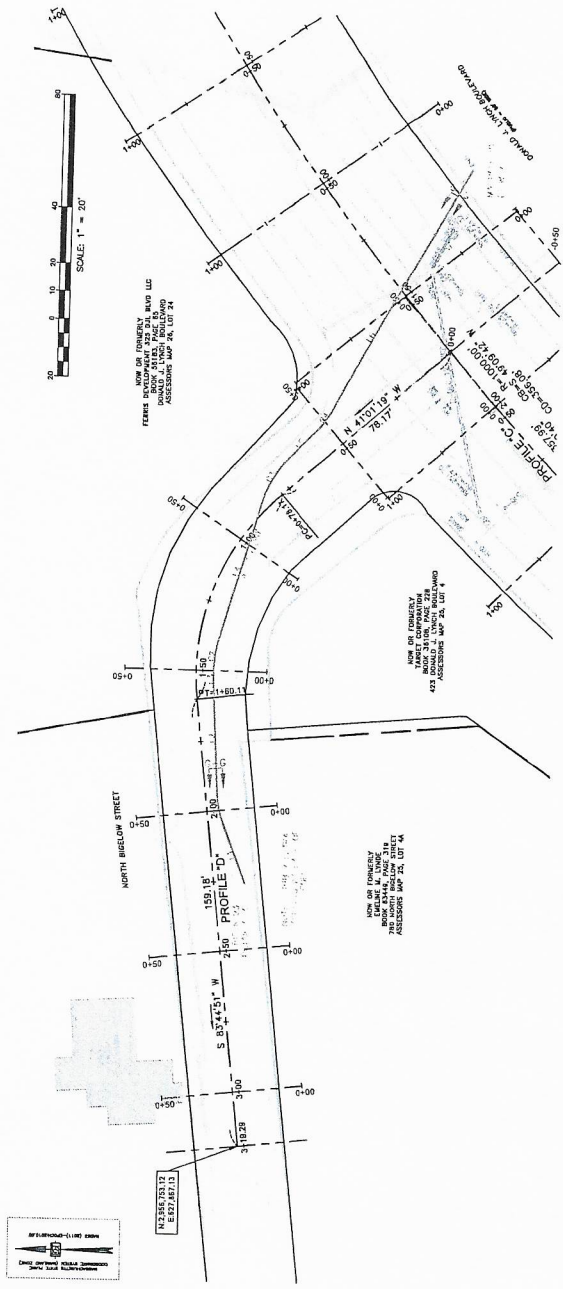
		nationalgrid	
DESCRIPTION INITIAL RELEASE		MARLBORO SUB EXPANSION MARLBOROUGH, MA	
DATE	DES	CHK	APP
7/27/2021	JF	JF	JF
DATE	DES	CHK	APP
7/27/2021	JF	JF	JF
DATE	DES	CHK	APP
7/27/2021	JF	JF	JF
DATE	DES	CHK	APP
7/27/2021	JF	JF	JF
DRAWING NO.		P-0	



REV	DATE	DES	CHK	APP
1	1/22/2011	SR	SR	SR

NO.	DATE	BY	CHKD	SCALE
1	1/22/2011	SR	SR	1" = 100'

nationalgrid
MARLBORO SUB EXPANSION
MARLBOROUGH, MA
SK200

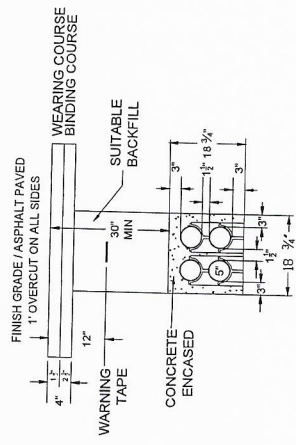


LINE DATA TABLE

ID	LENGTH	BEARING	START POINT	END POINT
L1	1.839	N 169° 00' 11.30"E	N 246389.031 E 52330.033	N 246389.031 E 52330.033
L2	3.106	N 87° 05' 26.85"E	N 246386.607 E 52332.775	N 246386.607 E 52332.775
L3	0.313	N 88° 00' 56.22"E	N 246387.064 E 52335.377	N 246387.064 E 52335.377
L4	4.249	S 73° 56' 12.81"E	N 246386.940 E 52337.169	N 246386.940 E 52337.169
L5	0.915	S 44° 13' 08.17"E	N 246384.908 E 52342.688	N 246384.908 E 52342.688
L6	7.935	S 60° 48' 25.28"E	N 246383.574 E 52344.317	N 246383.574 E 52344.317

CURVE DATA TABLE

ID	LENGTH	CHORD DIRECTION	START POINT	END POINT
C1	1.052	N 78° 02' 48.07"E	N 246386.689 E 52332.775	N 246386.689 E 52332.775
C2	0.892	S 62° 27' 38.20"E	N 246387.070 E 52337.169	N 246387.070 E 52337.169
C3	1.700	S 59° 19' 40.89"E	N 246384.908 E 52342.688	N 246384.908 E 52342.688
C4	1.196	S 55° 00' 07.41"E	N 246384.259 E 52344.317	N 246384.259 E 52344.317



DESCRIPTION
INITIAL RELEASE

MARLBORO SUB EXPANSION
MARLBOROUGH, MA

DATE	DES	CHK
1/27/2007	MF	SP

REV	DATE	BY	APP
A			

DATE	DES	CHK
1/27/2007	MF	SP

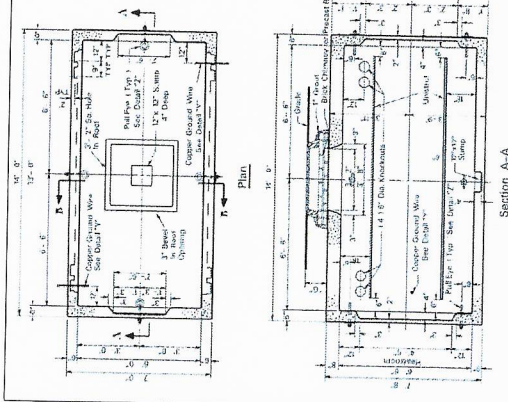
DATE	DES	CHK
1/27/2007	MF	SP

DATE	DES	CHK
1/27/2007	MF	SP

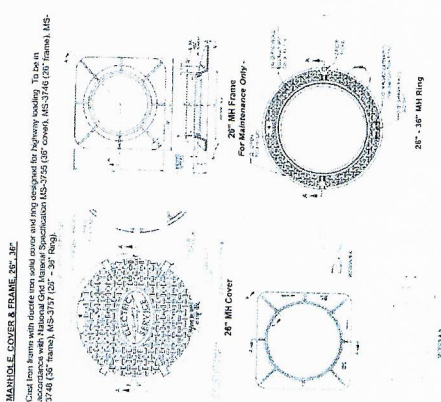
DATE	DES	CHK
1/27/2007	MF	SP

DATE	DES	CHK
1/27/2007	MF	SP

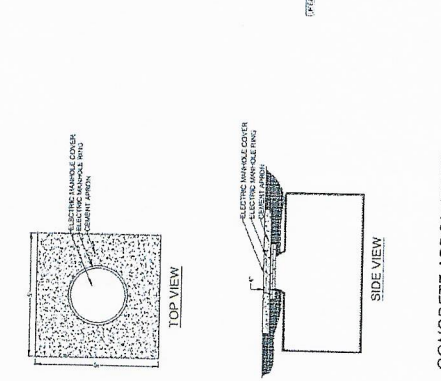
DATE	DES	CHK
1/27/2007	MF	SP



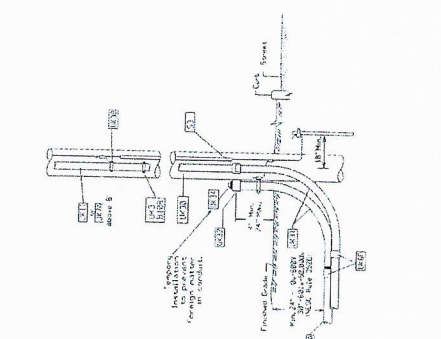
TYPICAL 2-WAY MANHOLE DETAIL



TYPICAL 3-WAY MANHOLE DETAIL



TYPICAL CONDUIT TERMINATION DETAIL FOR SPARE CONDUIT



CONCRETE APRON DETAIL



MANHOLE COVER AND FRAME DETAIL



MANHOLE COVER AND FRAME DETAIL

REFERENCE DRAWINGS

DISTRIBUTION CIVIL PLAN AND PROFILES SK 201-SK 203

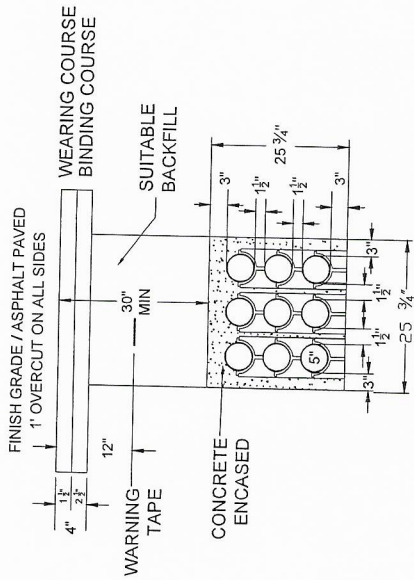
REV	DATE	DES	CHK	APP	DESCRIPTION
A	1/27/2011	W	W	W	INITIAL RELEASE

ControlPoint
TECHNOLOGIES

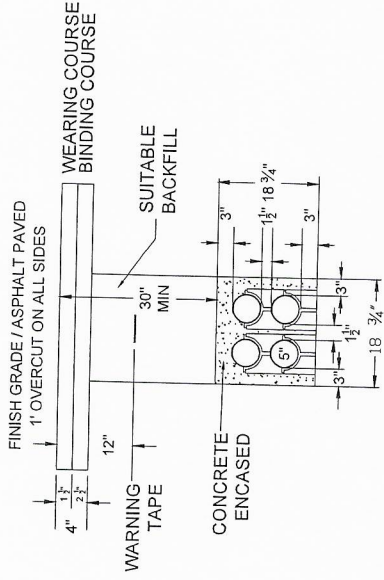
nationalgrid
MARLBORO SUB EXPANSION
MARLBOROUGH, MA

DATE: 1/27/2011
DESIGNER: W
CHECKER: W
APPROVER: W

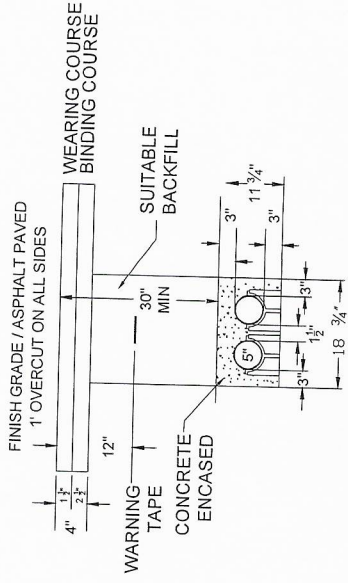
SK200



DUCT PROFILE 'D-D'
9-5"





DUCT PROFILE 'G-G'
4-5"

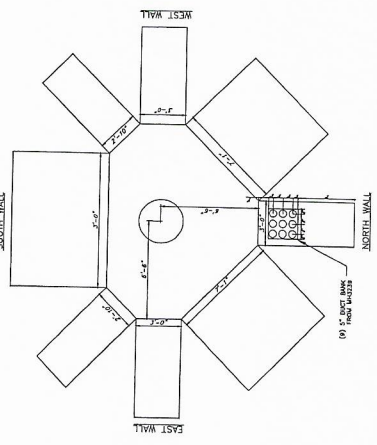


DUCT PROFILE 'H-H'
2-5"

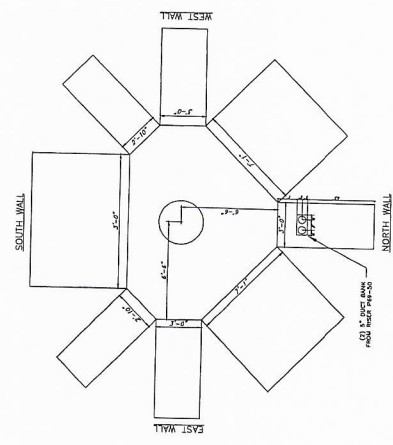
REFERENCE DRAWINGS
DISTRIBUTION CIVIL PLAN AND PROFILES SK 201-SK 203

	DATE	DES	CHK	APP
	1/27/2017	MF	JP	
DESCRIPTION	INITIAL RELEASE			
NO.				
A				

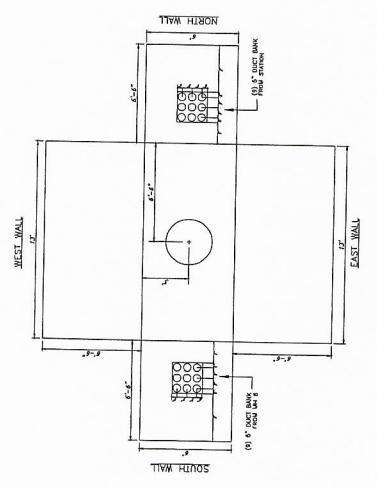

 MARLBORO SUB EXP ANSION
 MARLBOROUGH, MA
 2/28/2017
 SK 203



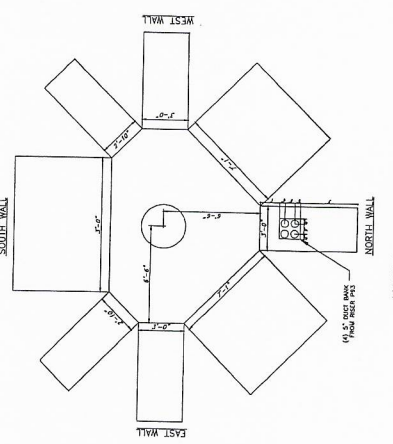
MANHOLE NUMBER: 8
 SIZE: L=13' W=10' H=6'-6"
 MANHOLE RING SIZE: 36"
 MANHOLE COVER SIZE: 26"
 CHIMNEY HEIGHT: 1'-0"



MANHOLE NUMBER: 1
 SIZE: L=13' W=10' H=6'-6"
 MANHOLE RING SIZE: 36"
 MANHOLE COVER SIZE: 26"
 CHIMNEY HEIGHT: 1'-0"



MANHOLE NUMBER: 3239
 SIZE: L=13' W=6' H=6'-6"
 MANHOLE RING SIZE: 36"
 MANHOLE COVER SIZE: 26"
 CHIMNEY HEIGHT: 1'-0"



MANHOLE NUMBER: 10
 SIZE: L=13' W=10' H=6'-6"
 MANHOLE RING SIZE: 36"
 MANHOLE COVER SIZE: 26"
 CHIMNEY HEIGHT: 1'-0"

nationalgrid

MARLBORO SUB EXPANSION
 MARLBOROUGH, MA

REV	DATE	DESCRIPTION	DATE	CHK	APP
A	1/27/2011	FINAL RELEASE			

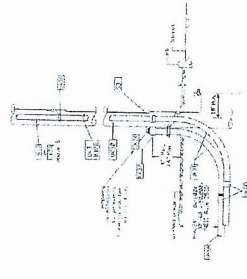
DATE: 1/27/2011

SCALE: 1"=40'

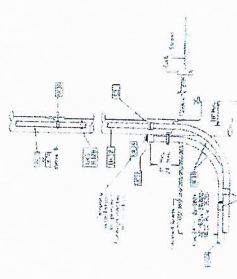
PROJECT: MARLBORO SUB EXPANSION

SK002

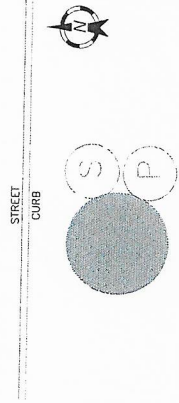
REFERENCE DRAWINGS
 DISTRIBUTION CIVIL PLAN AND PROFILES SK 201-SK 203
 DISTRIBUTION MH DETAILS SK-300



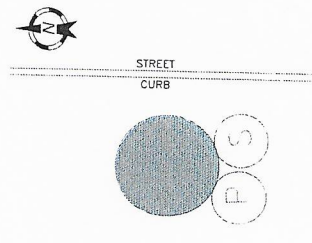
TYPICAL CONDUIT
TERMINATION DETAIL FOR
SPARE CONDUIT



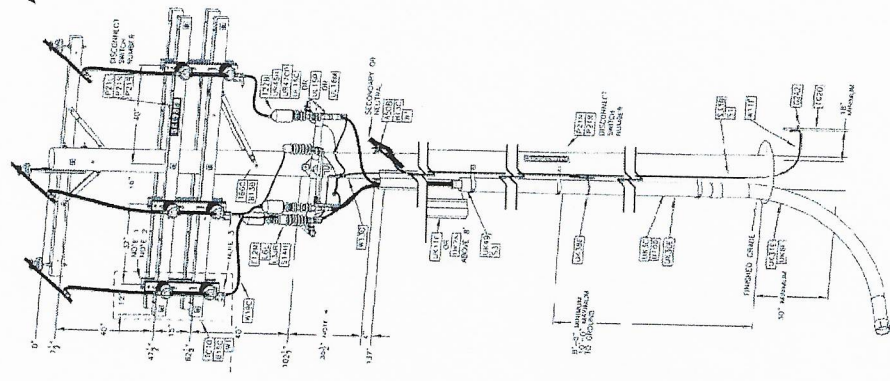
TYPICAL CONDUIT
TERMINATION DETAIL FOR
SPARE CONDUIT



POLE 93 NORTH BIGELOW
N.T.S.



POLE 69-50 BIGELOW
N.T.S.



PRIMARY RISER DETAIL C - C

- 5' RISER
 - PVC conduit type DB (5')
 - STD Item • UK645
 - PVC female adapter to go from PVC to threaded steel (5')
 - STD Item • UK6F5
 - 90 degree galvanized steel sweep (5')
 - STD Item • UK6F5
 - Galvanized steel conduit coupling (5')
 - STD Item • UK32G
 - Galvanized steel plug
 - STD Item • UK54G
 - Galvanized steel conduit clip (5')
 - STD Item • UK300
 - Galvanized steel lag screw with a hex head and a steel/neoprene washer (5')
 - STD Item • UK308
 - STD Item • UK308
 - STD Item • UK308
 - STD Item • UK35F

- 5' RISER
 - PVC conduit type DB (5')
 - STD Item • UK645
 - PVC female adapter to go from PVC to threaded steel (5')
 - STD Item • UK6F5
 - 90 degree galvanized steel sweep (5')
 - STD Item • UK308
 - Galvanized steel conduit coupling (5')
 - STD Item • UK32G
 - Galvanized steel plug
 - STD Item • UK34G
 - STD Item • UK300
 - Galvanized steel conduit clip (5')
 - STD Item • UK308
 - Galvanized steel lag screw with a hex head and a steel/neoprene washer (5')
 - STD Item • UK308
 - STD Item • UK308
 - STD Item • UK35F

DESCRIPTION: INITIAL RELEASE

REV	DATE	ISS	CHK	APP
A	7/27/2017	W	JP	APP

nationalgrid
MARLBORO SUB EXPANSION
MARLBOROUGH, MA

DATE: 7/27/2017
SCALE: AS SHOWN

100 PARKINGWAY

Property Information
Property ID 114837-A
Location 100 PARKINGWAY
Owner CITY OF QUINCY



MAP FOR REFERENCE ONLY
NOT A LEGAL DOCUMENT

City of Quincy, MA makes no claims and no warranties, expressed or implied, concerning the validity or accuracy of the GIS data presented on this map.

Geometry updated 07/26/2018
Data updated 01/07/2019

Print map scale is approximate. Critical layout or measurement activities should not be done using this resource.

