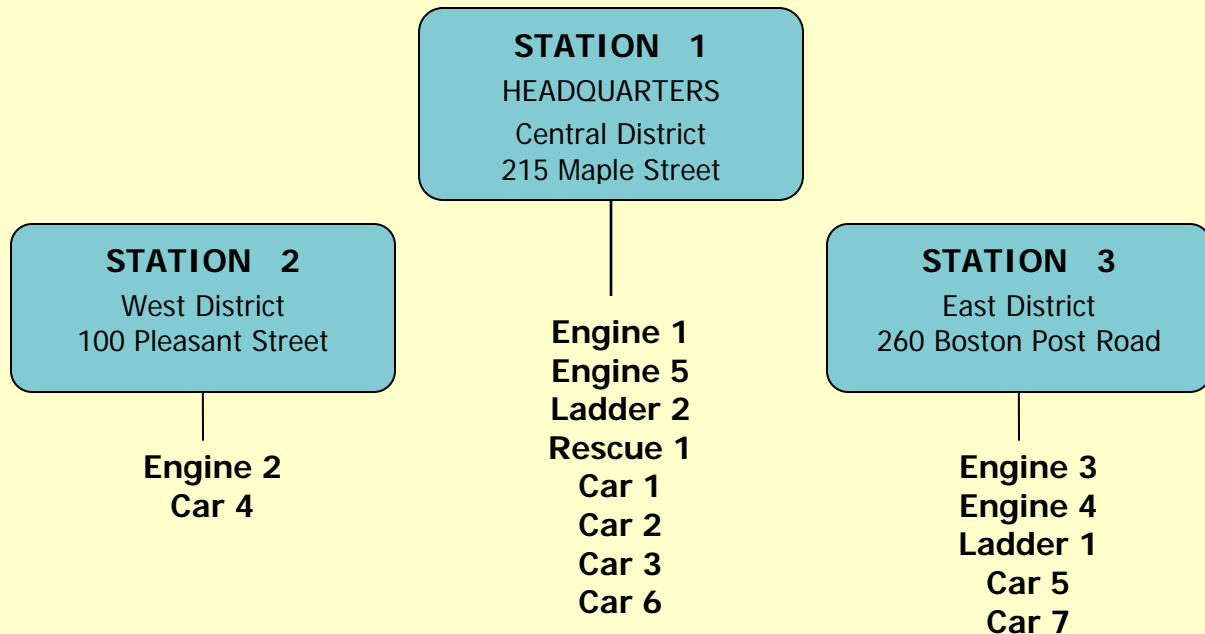


# Marlborough Fire Stations and Apparatus



## Frontline Apparatus

<b>Engine 1:</b>	2004	E-One Typhoon custom rescue pumper, 1500 gpm, 750 gal tank
<b>Engine 2:</b>	2003	E-One Typhoon custom rescue pumper, 1500 gpm, 750 gal tank
<b>Engine 3:</b>	1997	E-One Hurricane custom pumper, 1250 gpm, 750 gal tank
<b>Ladder 1:</b>	1982	E-One 110' rear mount aerial on a Pemfab custom chassis
<b>Ladder 2:</b>	1999	E-One 110' rear mount aerial on Hurricane chassis
<b>Rescue 1:</b>	2004	Saulsbury/Freightliner medium rescue

## Support Vehicles

<b>Car 1:</b>	1997	Ford Explorer 4x4
<b>Car 2:</b>	1997	Ford Expedition 4x4
<b>Car 3:</b>	1999	Chevrolet Suburban 4x4
<b>Car 4:</b>	2000	Ford F-350 pickup truck 4x4
<b>Car 5:</b>	2006	Ford F-350 pickup truck 4x4
<b>Car 6:</b>	1984	Ford Econoline van (arson investigation unit)
<b>Car 7:</b>	1985	Humvee 4x4 (brush fire unit)

## Reserve Apparatus

<b>Engine 4:</b>	1987	E-One pumper on a Ford C8000 cab/chassis, crew cab, 1000 gpm, 750 gal tank
<b>Engine 5:</b>	1991	Central States pumper on International Navistar 4-door cab/chassis, 1250 gpm, 750 gal tank